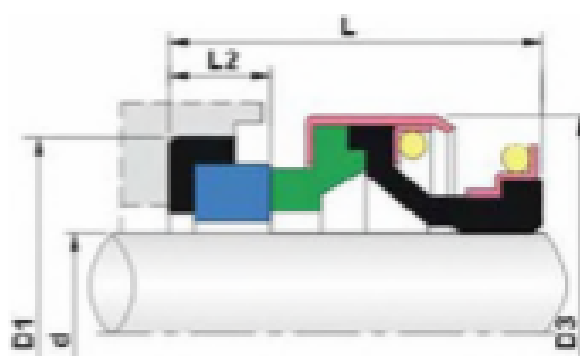
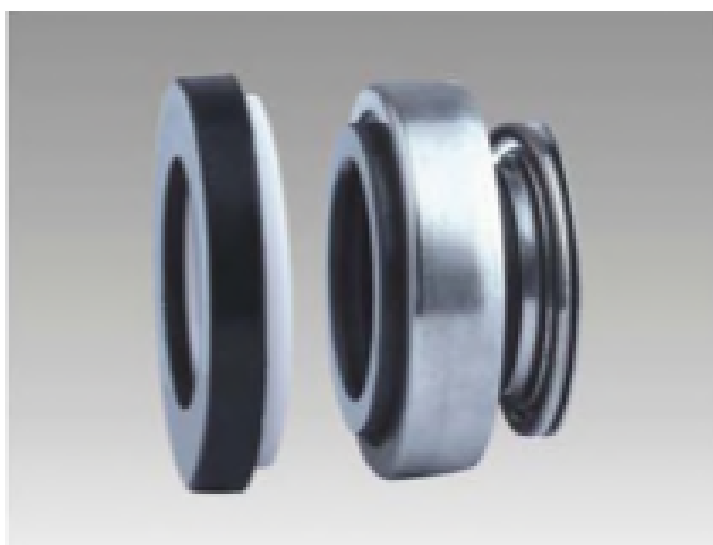




Sellos mecánicos con fuelle elastómero

**MEC-301**

- **Condiciones de operación:**  
Temperatura: -20 °C a +120 °C
- Presión: ≤ 0,6 MPa  
Velocidad: ≤ 10 m/s
- **Materiales:**  
Pista estacionaria: V1, Q2  
Pista rotatoria: B, Q5, Q2  
Sello secundario: P, E, V  
Resorte y piezas metálicas: F
- **Usos:** agua limpia.



Medida (Métrico)	d	D3	D1	L	L2
6	6	18.0	18.0	14.0	4.0
8S	8	18.0	22.0	15.0	4.0
8M	8	20.0	22/26	15.0	4/5.5
8L	8	24.0	26.0	15.0	5.5
10	10	24.0	26.0	21.0	8.0
11	11	24.0	26.0	21.0	8.0
12	12	24.0	25/26	21.0	8.0
13	13	24.0	26.0	19.5	5.5/8
13L	13	28.0	28.0	21.0	8.0
13H	13	32.0	29.5	30.5	8.0
14	14	28.0	28/28.5	21.0	8.0
14L	14	32.0	29.5	21.0	8.0
15S	15	28.0	28.5/30	21.0	8.0
15M	15	32.0	30/29.5	21.0	8.0
15L	15	39.0	38.0	21.0	8.0
16S	16	28.0	29.5/30	21.0	8.0
16M	16	32.0	29.5	21.0	8.0
16L	16	39.0	38.0	21.0	8.0
16H	16	32.0	30.0	21.0	10.0
17	17	39.0	42.0	21.0	8.0
18	18	39.0	42.0	21.0	8.0

Medida (Pulgadas)	d	D3	D1	L	L2
19	19	39.0	42.0	21.0	8.0
20	20	39.0	42.0	21.0	8.0
20L	20	42.0	45.0	23.0	10.0
22S	22	36.0	45.0	26.5	10.0
22L	22	42.0	45.0	23.0	10.0
23	23	47.0	50.0	23.5	10.0
24	24	47.0	50.0	23.5	10.0
25	25	42.0	50.0	23.5	10.0
25L	25	47.0	50.0	23.5	10.0
26	26	47.0	50.0	23.5	10.0
27	27	47.0	50.0	23.5	10.0
28	28	54.0	57.0	25.0	10.0
30	30	54.0	57.0	25.0	10.0
32	32	54.0	57.0	25.0	10.0
35	35	60.0	63.0	26.0	10.0
38	38	65.0	68.0	30.0	12.0
40	40	65.0	68.0	30.0	12.0
45	45	70.0	73.0	39.0	12.0
50	50	85.0	88.0	38.0	15.0
55	55	85.0	88.0	38.0	15.0
60	60	105.0	110.0	45.0	15.0